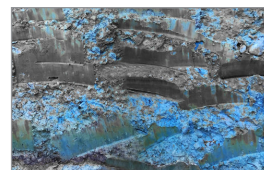


# 2017 CHÂTEAU SÉRAPHINE

## CHÂTEAU SÉRAPHINE



**WINEMAKER:** Charlotte Krajewski  
**REGION:** Pomerol, France  
**VARIETALS:** Merlot  
**MATURATION:** French oak barrels (50% new) for 16 months  
**ALCOHOL:** 13.5% alc/vol

**VINTAGE:** 2017 will go down as the year of the frost, but it is clear that this really was a vintage of haves, have-nots and those somewhere in between. For those vineyards that weren't hit, the grape quality was often excellent. Flowering began in May and was not affected by the heavy rain at the end of June. July was mixed and August was fairly hot and dry. The end result for Clos Cantenac was also a tale of two halves, a much lower production than usual due to the frost but very high-quality fruit that was not affected.

**WINEMAKING:** One day of cold soaking followed by alcoholic fermentation for 9-10 days with regular 'remontage' and a single 'delestage'. Post fermentation extended maceration for 3 weeks followed by malolactic fermentation in 300L French oak barrels (50% new, 50% second fill) and then aged in barrels for 16 months. Additionally two new french oak 'barrel integrale' were filled by gravity directly from the sorting table.

**TASTING NOTES:** Showing great elegance and finesse with aromas of fine fresh black fruit overlaid with subtle smoky notes of wild strawberries, blackberries, cherries and cassis, with just a touch of spice and white pepper. On the palate, the wine is velvety soft, displaying rich silky tannins well supported by a further impressive register of red and black fruits running through the core, with delicate hints of chocolate and mocha that combine well to present a long, pleasant and persistent finish.

**CRITICAL ACCLAIM:** 94 pts Robert Parker Wine Advocate

**ABOUT CHÂTEAU SÉRAPHINE:** In 2016 the Krajewski family acquired the vines and farm buildings of Chateau Monbrun and the ancient house and winery of Clos Picasso and then merged the two properties into one. Permission was granted by the Syndicate in Pomerol to rename the Property as Chateau 'Séraphine' after Martin's Grandmother. After all, Chateau Séraphine is a family affair borne from a long association with the land, and a great respect the history and tradition of these ancient Pomerol soils and the people that have worked here over the long years.

